

PRESIDENTIAL ACTIONS

# DEFENDING WOMEN FROM GENDER IDEOLOGY EXTREMISM AND RESTORING BIOLOGICAL TRUTH TO THE FEDERAL GOVERNMENT

EXECUTIVE ORDER

January 20, 2025





## PRESIDENTIAL ACTIONS

ENDING WO  
ENDER ID  
M AND R  
CAL TRUT  
AL GOVER

EXECUTIVE ORDER

January 20, 2025

**Sec. 1. Purpose.** Across the country, ideologues who deny the **biological reality of sex** have increasingly used legal and other socially coercive means to permit men to self-identify as women and gain access to intimate single-sex spaces and activities designed for women, from women's domestic abuse shelters to women's workplace showers. **This is wrong.** Efforts to eradicate the biological reality of sex fundamentally attack women by depriving them of their dignity, safety, and well-being. The erasure of sex in language and policy has a corrosive impact not just on women but on the validity of the entire American system. **Basing Federal policy on truth is critical to scientific inquiry,** public safety, morale, and trust in government itself.

This unhealthy road is paved by an ongoing and purposeful attack against the ordinary and longstanding use and understanding of biological and scientific terms, replacing the **immutable biological reality of sex** with an internal, fluid, and subjective sense of self **unmoored from biological facts.** Invalidating the true and biological category of "woman" improperly transforms laws and policies designed to protect sex-based opportunities into laws and policies that undermine them, replacing longstanding, cherished legal rights and values with an identity-based, inchoate social concept.

Accordingly, my Administration will defend women's rights and protect freedom of conscience by **using clear and accurate language and policies that recognize women are biologically female, and men are biologically male.**



## PRESIDENTIAL ACTIONS

ENDING WO  
ENDER ID  
M AND R  
CAL TRUT  
AL GOVER

EXECUTIVE ORDER

January 20, 2025

## Sec. 2. Policy and Definitions. ...

- (a) “Sex” shall refer to an individual’s **immutable biological classification** as either male or female. “Sex” is not a synonym for and does not include the concept of “gender identity.”
- (b) “Women” or “woman” and “girls” or “girl” shall mean adult and juvenile human females, respectively.
- (c) “Men” or “man” and “boys” or “boy” shall mean adult and juvenile human males, respectively.
- (d) “Female” means a person **belonging, at conception**, to the sex that produces the large reproductive cell.
- (e) “Male” means a person **belonging, at conception**, to the sex that produces the small reproductive cell.



## PRESIDENTIAL ACTIONS

ENDING WO  
ENDER ID  
SM AND R  
CAL TRUT  
AL GOVER

EXECUTIVE ORDER

January 20, 2025

(f) “Gender ideology” replaces the biological category of sex with an ever-shifting concept of self-assessed gender identity, permitting the false claim that males can identify as and thus become women and vice versa, and requiring all institutions of society to regard this false claim as true. Gender ideology includes the idea that there is a vast spectrum of genders that are disconnected from one’s sex. Gender ideology is internally inconsistent, in that it diminishes sex as an identifiable or useful category but nevertheless maintains that it is possible for a person to be born in the wrong sexed body.

(g) “Gender identity” reflects a fully internal and subjective sense of self, disconnected from biological reality and sex and existing on an infinite continuum, that does not provide a meaningful basis for identification and cannot be recognized as a replacement for sex.

**Sec. 3: Recognizing Women Are Biologically Distinct From Men**

**Sec. 4: Privacy in Intimate Spaces**

**Sec. 5: Protecting Rights**

**Sec. 6: Bill Text**

**Sec. 7: Agency Implementation and Reporting**

**Sec. 8: General Provisions**



## PRESIDENTIAL ACTIONS

ENDING WO  
ENDER ID  
M AND R  
AL TRUT  
AL GOVER

EXECUTIVE ORDER

January 20, 2025

From the perspective of scientific inquiry .....

- **Immutable** biological reality of sex
- **Immutable** biological classification
- "Male" / "Female" means a person belonging, **at conception**, to the sex that produces the large reproductive cell.
- "Gender ideology" replaces the **biological category of sex** with an ever-shifting concept of self-assessed gender identity



# SEX

THE IDEA OF TWO SEXES IS SIMPLISTIC.

BIOLOGISTS NOW THINK THERE IS A

WIDER SPECTRUM THAN THAT.

# REDEFINED

# THE SEX SPECTRUM

A typical male has XY chromosomes, and a typical female has XX. But owing to genetic variation or chance events in development, some people do not fit neatly into either category. Some are classed as having differences or disorders of sex development (DSDs), in which their sex chromosomes do not match their sexual anatomy.

- Chromosomes
- Gonads
- Genitals
- Other characteristics/ examples

Typical male	Subtle variations	Moderate variations	46,XY DSD
<ul style="list-style-type: none"> <li>● XY</li> <li>● Testes</li> <li>● Male internal and external genitals</li> <li>● Male secondary sexual characteristics</li> </ul>	<ul style="list-style-type: none"> <li>● XY</li> <li>● Testes</li> <li>● Male internal and external genitals</li> <li>● Subtle differences such as low sperm production. Some caused by variation in sex-development genes.</li> </ul>	<ul style="list-style-type: none"> <li>● XY</li> <li>● Testes</li> <li>● Male external genitals with anatomical variations such as urethral opening on underside of penis.</li> <li>● Affects 1 in 250–400 births.</li> </ul>	<ul style="list-style-type: none"> <li>● XY</li> <li>● Testes</li> <li>● Often ambiguous</li> <li>● The hormonal disorder persistent Müllerian duct syndrome results in male external genitals and testes, but also a womb and Fallopian tubes.</li> </ul>

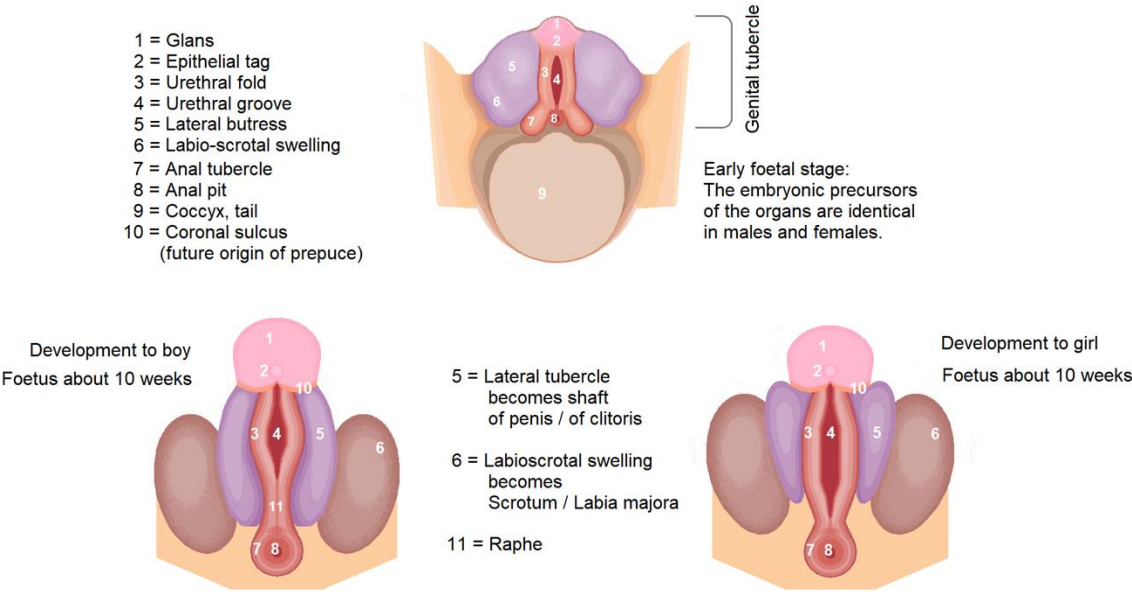
Ovotesticular DSD	46,XX testicular DSD	Moderate variations	Subtle variations	Typical female
<ul style="list-style-type: none"> <li>● XX, XY or mix of both</li> <li>● Both ovarian and testicular tissue</li> <li>● Ambiguous</li> <li>● Rare reports of predominantly XY people conceiving and bearing a healthy child.</li> </ul>	<ul style="list-style-type: none"> <li>● XX</li> <li>● Small testes</li> <li>● Male external genitals</li> <li>● Usually caused by presence of male sex-determining gene <i>SRY</i>.</li> </ul>	<ul style="list-style-type: none"> <li>● XX</li> <li>● Ovaries</li> <li>● Female internal and external genitals</li> <li>● Variations in sex development such as premature shutdown of ovaries. Some caused by variation in sex-development genes.</li> </ul>	<ul style="list-style-type: none"> <li>● XX</li> <li>● Ovaries</li> <li>● Female internal and external genitals</li> <li>● Subtle differences such as excess male sex hormones or polycystic ovaries.</li> </ul>	<ul style="list-style-type: none"> <li>● XX</li> <li>● Ovaries</li> <li>● Female internal and external genitals</li> <li>● Female secondary sexual characteristics</li> </ul>

# Developments of genitals

## Typical XY

## Typical XX

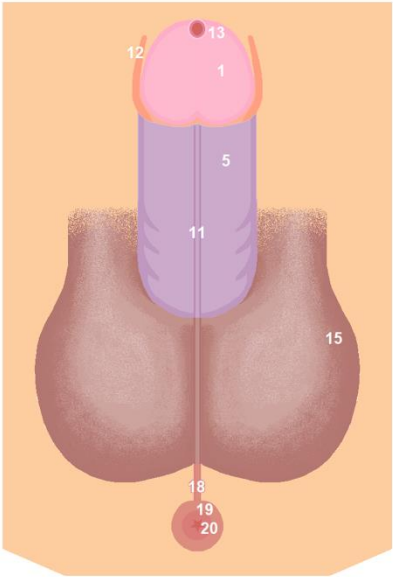
Homologies in the anatomy of the external human genitalia



10-weeks after conception

## Typical XY

Time of birth

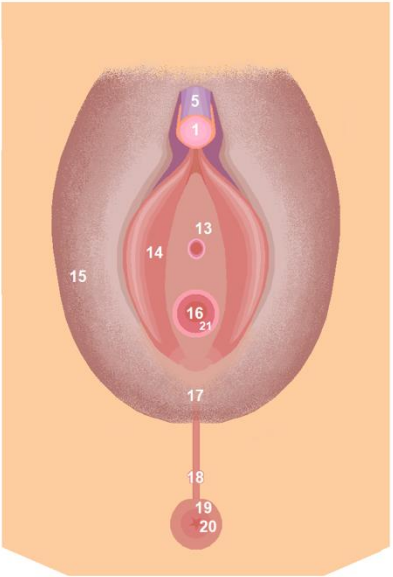


- 12 = Prepuce  
13 = External urethral orifice  
14 = Labia minora (inner Lips)  
15 = Labia majora (outer Lips)  
or Scrotum  
16 = Vaginal orifice  
17 = Posterior labial commissure  
18 = Perineal raphe  
19 = Perianal tissues  
including external  
anal sphincter muscle  
20 = Anus  
21 = Hymen

Time of birth

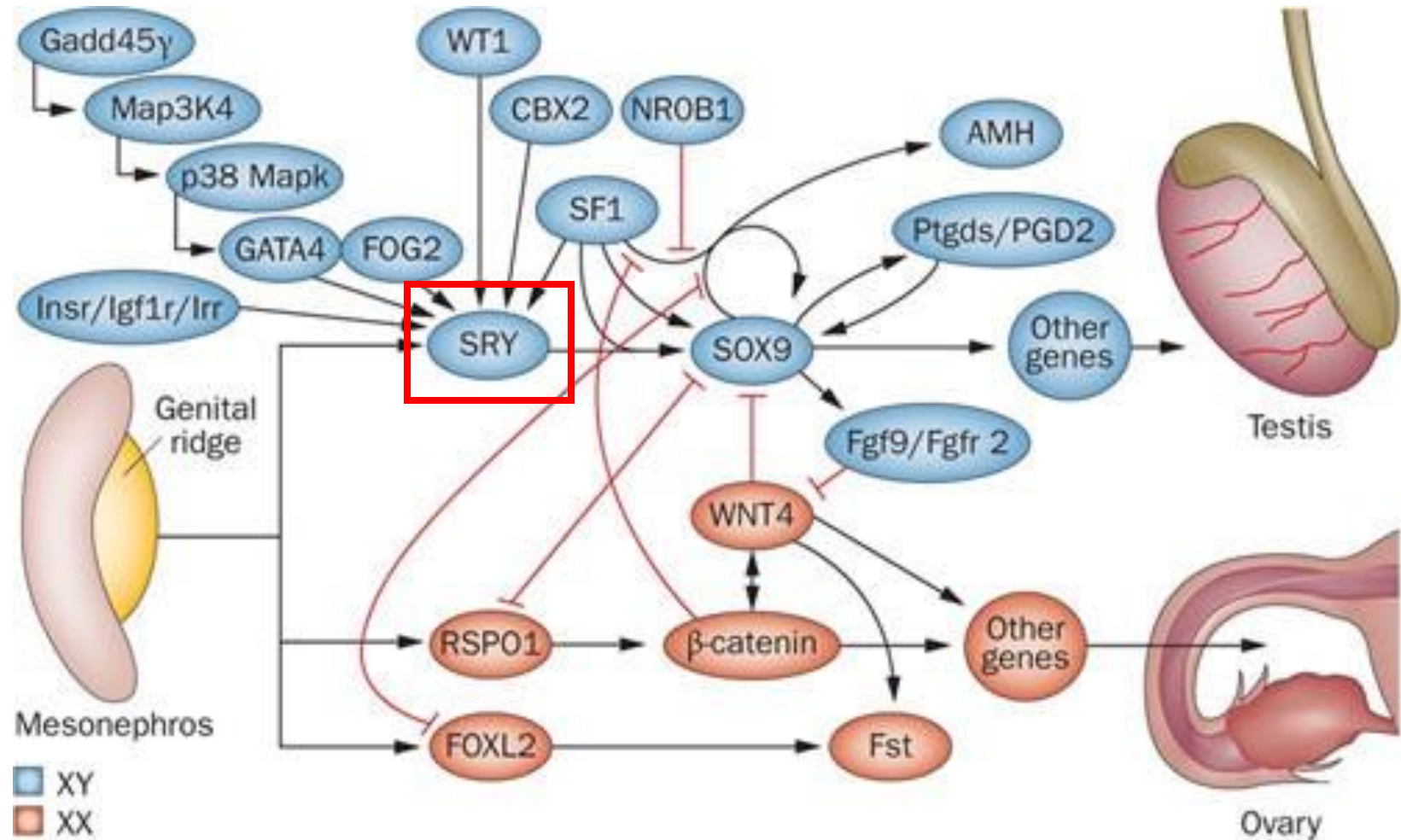
## Typical XX

Time of birth





# Sex-determining region Y protein



**"Biological traits are not immutable or binary; rather, they are variable and exist on a continuum."**